

F.F.C. 92.78
F.17.1

2152
(334172)

1

APR 24 1918

CGP 33922



WATER FACILITIES:
Gravity system. Water Works built 1911 owned by town. Water supplied by 6 driven wells. 1 tower. Benford pump, capacity 45,000 gals. per 24 hours. Water tank level 25' capacity 40,000 gals. Average pressure 25 lbs. - 74 miles of 8" & 8" cast-iron pipe in use. Average daily consumption 50,000 gals. 20 hydrants. Water tank shown in detachment below.

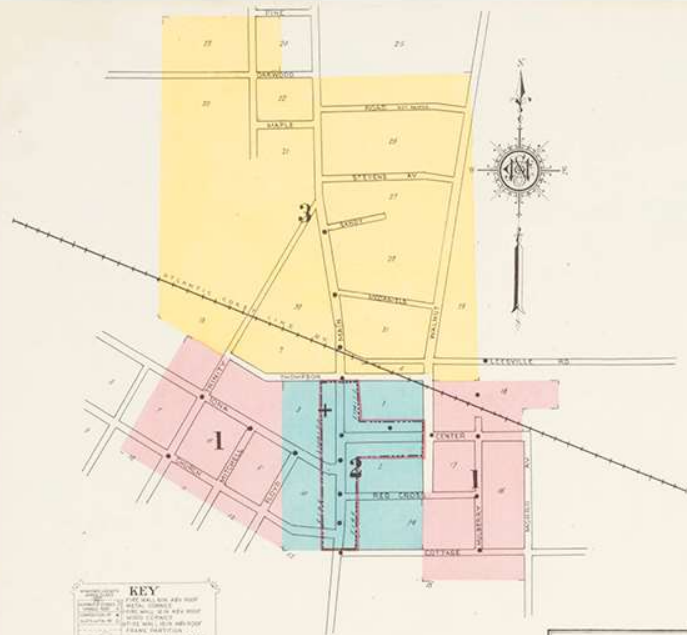
FIRE DEPT.
2 hose reels, 1000' 3/4 hose. 2100's gal Chem Engine on wheels. Alarm sounded by bell in daytime & by whistle on Power Station or night. No fire alarm boxes.
Elevators - approximately level. Streets not paved. Public lights electric.

THIS ITEM MAY NOT BE REPRODUCED IN FULL OR IN PART WITHOUT WRITTEN AUTHORIZATION FROM THE NORTH CAROLINA COLLECTION, UNIVERSITY OF NORTH CAROLINA LIBRARY AT CHAPEL HILL.

WARNING: THIS MATERIAL MAY BE PROTECTED BY COPYRIGHT LAW

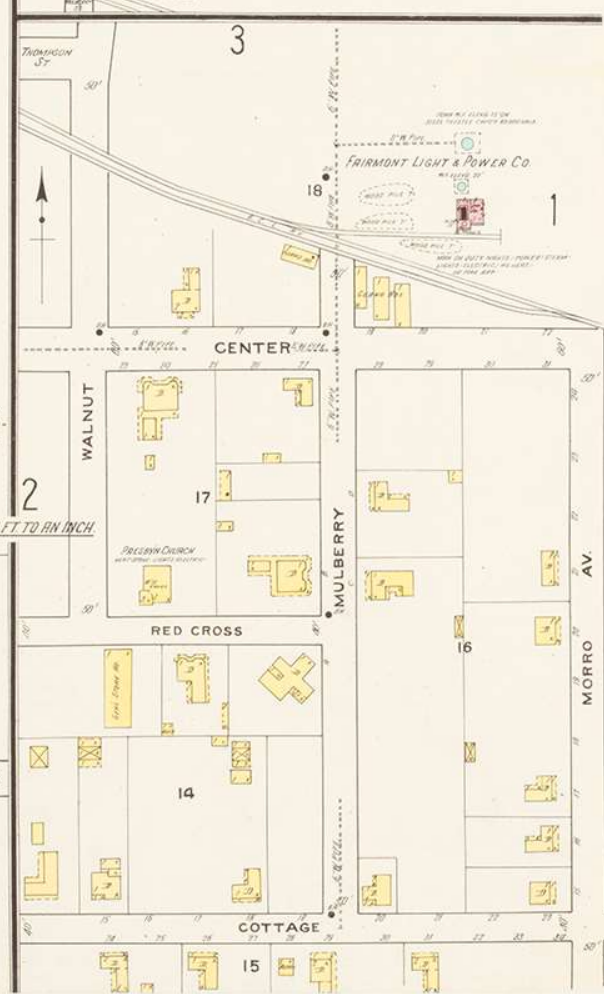
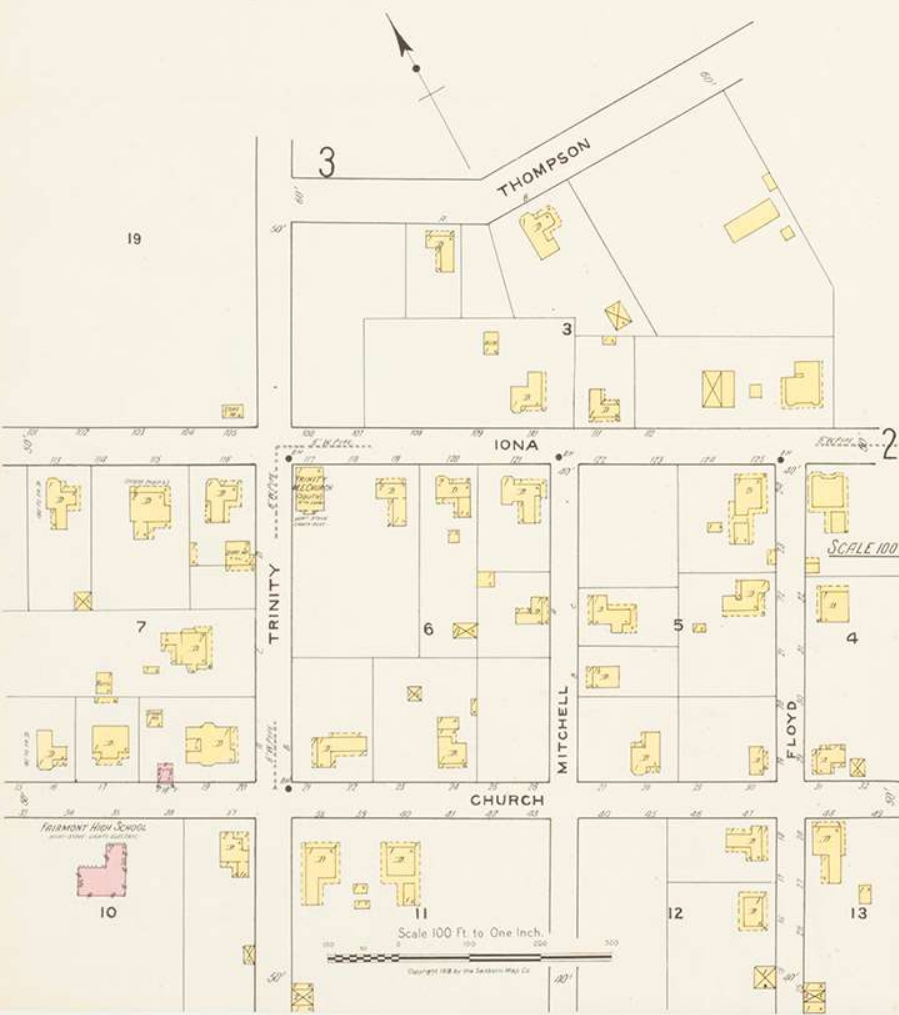
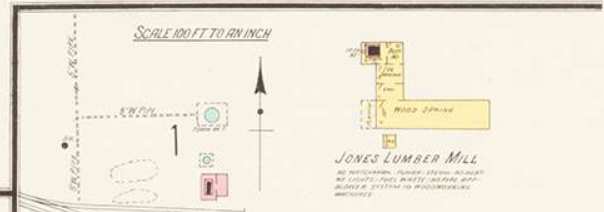
INDEX

SPECIALS	INDEX
A. C. L. R. R. Depot,	3
Bank of Fairmont Building,	2
Baptist Church (Negro),	3
Beaufort County Lumber Co., Machine Shop, &c.,	3
Commercial Hotel,	3
Fairmont High School,	1
Hotel,	1
First Baptist Church,	2
Jones Lumber Mill,	1
People's Bank Building,	2
Presbyterian Church,	1
Trinity Methodist Episcopal Church,	1
Union Ginning Co.,	3



KEY

- CONCRETE BLOCK
- BRICK
- WOOD SHED
- WATER TOWER
- WATER TANK
- WATER MAIN
- WATER HYDRANT
- WATER VALVE
- WATER PUMP
- WATER ENGINE
- WATER MOTOR
- WATER PUMP HOUSE
- WATER TOWER
- WATER TANK
- WATER MAIN
- WATER HYDRANT
- WATER VALVE
- WATER PUMP
- WATER ENGINE
- WATER MOTOR
- WATER PUMP HOUSE



75/1455